



6°

4.3°

3°

JSAT

CONNECTING THE WORLD.

GT-SAT International, is a world leader in development and manufacturing of LNBS and innovative accessories for the reception of the digital television. Being present worldwide, our products are distributed in Europe, North Africa, Middle East, India, Latin America and Russia.

With more than 40 different LNB models and numerous other equipment, we serve a wide variety of tier one TV operators and leading brands.

The company maintains strict standards regarding manufacturing, distribution and delivery of its products.

Our strength: a rapid and instant adaptation of our products to the market needs. We develop high quality and innovative products according to the market requirements. All our products are tested and approved before their launch to the market and this way we guarantee the premium quality of the hardware.

This unique approach allows for a true holistic view for product and system design.

We would like to thank all our customers for their constant support and belief over the years.



Guil Mediouni
President



LNB

GT-SAT LNBS

RELOOK LNB

3 - 5

ACCESSORIES

Amplifiers

Power Supplies

Connectors

Surge Protector

Splitters

Switch Line

Cable Accessories

7 - 14

MULTISWITCH

15

CABLES

Coax Cables

UTP & SFTP Cables

16 - 23

DISHES

LH Line

25

LNB





GT-SLRC1
SINGLE L - SHAPE



GT-TL1
TWIN L - SHAPE



GT-QDL1
QUAD L - SHAPE

INPUT FREQUENCY RANGE	Low Band: 10.7 ~ 11.7 GHz High Band: 11.7 ~ 12.75 GHz	Low Band: 10.7 ~ 11.7 GHz High Band: 11.7 ~ 12.75 GHz	Low Band: 10.7 ~ 11.7 GHz High Band: 11.7 ~ 12.75 GHz
OUTPUT FREQUENCY RANGE	Low Band: 950 ~ 1950 GHz High Band: 1100 ~ 2150 GHz	Low Band: 950 ~ 1950 GHz High Band: 1100 ~ 2150 GHz	Low Band: 950 ~ 1950 GHz High Band: 1100 ~ 2150 GHz
LO. FREQUENCY	Low Band: 9.75 GHz High Band: 10.60 GHz	Low Band: 9.75 GHz High Band: 10.60 GHz	Low Band: 9.75 GHz High Band: 10.60 GHz
LO. FREQUENCY STABILITY	+/- 0.5 MHz (max.) at r.t.	+/- 0.5 MHz (maximum) at r.t.	+/- 0.5 MHz (maximum) at r.t.
LO. FREQUENCY PHASE NOISE	-60 dBc / Hz at 1 KHz (max.) -85 dBc / Hz at 10 KHz (max.) -97 dBc / Hz at 100 KHz (max.)	-60 dBc / Hz at 1 KHz (max.) -85 dBc / Hz at 10 KHz (max.) -97 dBc / Hz at 100 KHz (max.)	-60 dBc / Hz at 1 KHz (max.) -85 dBc / Hz at 10 KHz (max.) -97 dBc / Hz at 100 KHz (max.)
NOISE FIGURE	0.1 dB (typical)	0.1 dB (typical)	0.1 dB (typical)
CONVERSION GAIN	57 ~ 61 dB	57 ~ 61 dB	57 ~ 61 dB
GAIN FLATNESS 26MHz BANDWIDTH	+/- 0.5 dB (typical)	+/- 0.5 dB (typical)	+/- 0.5 dB (typical)
POLARITY SWITCHING VOLTAGE	VERTICAL: 11.0 ~14.0 Vdc HORIZONTAL: 16.0 ~ 20.0 Vdc	VERTICAL: 11.0 ~14.0 Vdc HORIZONTAL: 16.0 ~ 20.0 Vdc	VERTICAL: 11.0 ~14.0 Vdc HORIZONTAL: 16.0 ~ 20.0 Vdc
BAND SWITCHING	Low Band: 0 KHz High Band: 22 KHz (+/- 4KHz)	Low Band: 0 KHz High Band: 22 KHz (+/- 4KHz)	Low Band: 0 KHz High Band: 22 KHz (+/- 4KHz)
CROSS-POL. ISOLATION	22 dB (typical)	22 dB (typical)	22 dB (typical)
IMAGE REJECTION	40 dB (typical)	40 dB (typical)	40 dB (typical)
OUTPUT SPURIOUS	< -60 dBm	< -60 dBm	< -60 dBm
CURRENT CONSUMPTION	100 mA (typical)	140 mA (typical)	150 mA (typical)
OUTPUT CONNECTOR TYPE	75 Ohms F-Female	75 Ohms F-Female	75 Ohms F-Female
OPERATING TEMPERATURE RANGE	-40°C ~ +65°C	-40°C ~ +65°C	-40°C ~ +65°C
FEED LENGTH	29 mm	29 mm	42 mm



INPUT FREQUENCY RANGE

GT-QTL1
QUATTRO L - SHAPE

GT-QT40M
QUATTRO L - SHAPE

GT-OCL1
OCTO L - SHAPE

OUTPUT FREQUENCY RANGE

Low Band: 10.7 ~ 11.7 GHz
High Band: 11.7 ~ 12.75 GHz

Low Band: 10.7 ~ 11.7 GHz
High Band: 11.7 ~ 12.75 GHz

Low Band: 10.7 ~ 11.7 GHz
High Band: 11.7 ~ 12.75 GHz

LO. FREQUENCY

Low Band: 950 ~ 1950 GHz
High Band: 1100 ~ 2150 GHz

Low Band: 950 ~ 1950 GHz
High Band: 1100 ~ 2150 GHz

Low Band: 950 ~ 1950 GHz
High Band: 1100 ~ 2150 GHz

LO. FREQUENCY STABILITY

Low Band: 9.75 GHz
High Band: 10.60 GHz

Low Band: 9.75 GHz
High Band: 10.60 GHz

Low Band: 9.75 GHz
High Band: 10.60 GHz

LO. FREQUENCY PHASE NOISE

+/- 0.5 MHz (maximum) at r.t.
-60 dBc / Hz at 1 KHz (max.)
-85 dBc / Hz at 10 KHz (max.)
-97 dBc / Hz at 100 KHz (max.)

+/- 0.5 MHz (maximum) at r.t.
-60 dBc / Hz at 1 KHz (max.)
-85 dBc / Hz at 10 KHz (max.)
-97 dBc / Hz at 100 KHz (max.)

+/- 0.5 MHz (maximum) at r.t.
-60 dBc / Hz at 1 KHz (max.)
-85 dBc / Hz at 10 KHz (max.)
-97 dBc / Hz at 100 KHz (max.)

NOISE FIGURE

CONVERSION GAIN

GAIN FLATNESS 26MHz BANDWIDTH

POLARITY SWITCHING VOLTAGE

0.1 dB (typical)
57 ~ 61 dB
+/- 0.5 dB (typical)

0.1 dB (typical)
57 ~ 61 dB
+/- 0.5 dB (typical)

0.1 dB (typical)
57 ~ 61 dB
+/- 0.5 dB (typical)

BAND SWITCHING

-
-
-

-
-
-

VERTICAL: 11.0 ~14.0 Vdc
HORIZONTAL: 16.0 ~20.0 Vdc

CROSS-POL. ISOLATION

IMAGE REJECTION

OUTPUT SPURIOUS

CURRENT CONSUMPTION

OUTPUT CONNECTOR TYPE

OPERATING TEMPERATURE RANGE

FEED LENGTH

22 dB (typical)
40 dB (typical)
< -60 dBm
240 mA (typical)
75 Ohms F-Female
-40°C ~ +65°C
42 mm

22 dB (typical)
40 dB (typical)
< -60 dBm
240 mA (typical)
75 Ohms F-Female
-40°C ~ +65°C
35 mm

22 dB (typical)
40 dB (typical)
< -60 dBm
180 mA (typical)
75 Ohms F-Female
-40°C ~ +65°C
42 mm



RE-MINI S
SINGLE STRAIGHT FEED

INPUT FREQUENCY RANGE

Low Band : 10.7 ~ 11.7 GHz
High Band : 11.7 ~ 12.75 GHz

OUTPUT FREQUENCY RANGE

Low Band : 950 ~ 1950 MHz
High Band : 1100 ~ 2150 MHz

LO. FREQUENCY

Low Band : 9.75 GHz
High Band : 10.60 GHz

LO. FREQUENCY STABILITY

+/- 0.5 MHz (maximum) at r.t

LO. FREQUENCY PHASE NOISE

-60 dBc / Hz at 1 KHz (maximum)
-85 dBc / Hz at 10 KHz (maximum)
-97 dBc / Hz at 100 KHz (max.)

NOISE FIGURE

0.1 dB (typical)

CONVERSION GAIN

60 ~ 64 dB

GAIN FLATNESS 26MHz BANDWIDTH

+/- 0.5dB (typical)

POLARITY SWITCHING VOLTAGE

VERTICAL : 11.0 ~ 14.0 Vdc
HORIZONTAL : 16.0 ~ 20.0 Vdc

BAND SWITCHING

Low Band : 0 kHz
High Band : 22 kHz (+/- 4kHz)

CROSS-POL. ISOLATION

22 dB (typical)

IMAGE REJECTION

40 dB (minimum)

OUTPUT SPURIOUS

< -60 dBm

CURRENT CONSUMPTION

90 mA (typical)

OUTPUT CONNECTOR TYPE

75 Ohms F-Female

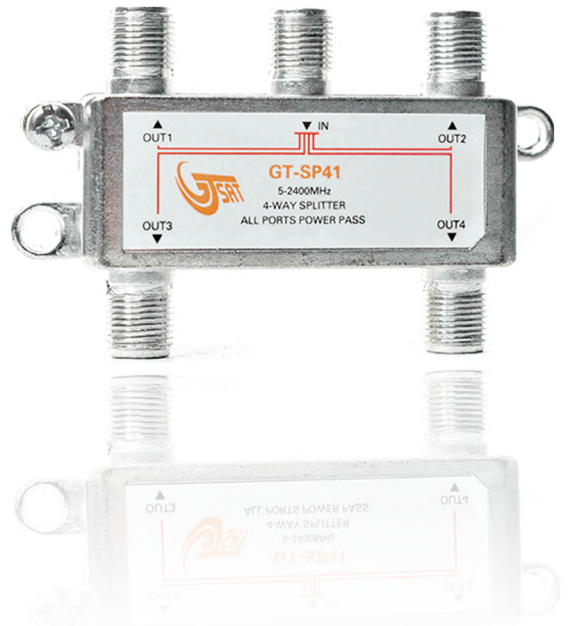
OPERATING TEMPERATURE RANGE

-40°C ~ +65°C

FEED LENGTH

29 mm

ACCESSORIES





MDU-AGC AMPLIFIER

GT-AGC1

GT-AGCAMP-2

NUMBER OF INPUTS	1
NUMBER OF OUTPUTS	1
FREQUENCY RANGE	950 ~ 2150 MHz
MAXIMUM GAIN	33 dB
	44 dB
MAXIMUM INPUT LEVEL	-17 dBm
MINIMUM INPUT LEVEL	-47 dBm
MINIMUM OUTPUT LEVEL	8 dB (maximum)
GAIN FLATNESS OVER FULL BAND	10 dB
AGC RANGE	30 dB
LED INDICATION	RED / YELLOW / GREEN*
NOISE FIGURE	6 dB
RETURN LOSS	> 10 dB
CURRENT CONSUMPTION	150 mA
MAXIMUM DC PASS TO LNB	800 mA
OPERATING TEMPERATURE	-20°C - 60°C
POWER SUPPLY	90-240V AC, 12V DC 1A
DIMENSIONS	95 x 60 x 35 mm
ESD PROTECTION	8 kV

1 TRUNK LINE + 1 for PSU
1 TRUNK LINE + 1 TEST
950 ~ 2150 MHz
@950 MHz: 33 dB
@2150 MHz: 44 dB
Aggregated for 24 TPs: -17 dBm
Aggregated for 24 TPs: -47 dBm
Aggregated for 24 TPs: 8 dBm
Coax Cable compensation: 10 dB
Aggregated for 24 TPs: 30 dB
RED / YELLOW / GREEN*
6 dB
> 10 dB
150 mA
800 mA
-20 - +60°C
INPUT: 90-240V AC
OUTPUT: 12V DC 1A
95 x 60 x 35 cm
8 kV

*RED: Signal Underdrive (Signal too Low)

YELLOW: Signal Overdrive (Signal too High)

GREEN: Signal Within The Input Range

NUMBER OF INPUTS	1
NUMBER OF OUTPUTS	1
FREQUENCY RANGE	950 ~ 2150 MHz
MAX. OUTPUT LEVEL SAT @-35 dB	110 dBμV
IMD3	15 to 20 dB
GAIN TOTAL	950 MHz: 15.0 dB
GAIN @	1200 MHz: 16.0 dB
	1450 MHz: 17.0 dB
	1750 MHz: 18.0 dB
	2050 MHz: 19.5 dB
	2150 MHz: 20.0 dB
NOISE FIGURE	5 dB
RETURN LOSS	8 dB
IMPEDANCE	75 Ω
CURRENT CONSUMPTION	50 mA
DC PASSTHROUGH	Yes
LINE POWER DC VOLTAGE (MAX.)	15 to 20 VDC
SCREENING EFFICIENCY:	EN50083-2 (Class A)
CONNECTOR TYPE:	F-Female
MAIN MATERIAL:	Zinc Diecast



GT-INLS20
IN-LINE AMPLIFIER



GT-PSU12-1A
POWER SUPPLY - 12V 1A

	VALUE	CONDITION
INPUT VOLTAGE	90 - 240V AC	
FREQUENCY	45 - 65 Hz	
INPUT CURRENT	0.16 A max.	
OUTPUT VOLTAGE	12V	
OUTPUT VOLTAGE TOLERANCE	± 5%	
MAX. OUTPUT CURRENT	1A	
OUTPUT POWER	12W	
STAND-BY POWER	0.1W max.	
LINE REGULATION	± 2%	
LOAD REGULATION	± 5%	
AC LEAKAGE CURRENT	0.25 mA max.	@240V AC
RIPPLE AT MAX. POWER	40 mVpp	-
EFFICIENCY	> 85%	@115/230V AC with 1/4, 1/2, 3/4 & full load
RISE TIME	40ms max.	@100V AC max. load
TURN-ON TIME	< 2s	@115V AC max. load
INSULATION RESISTENCE	> 50 MΩ	@500V DC
OVERVOLTAGE PROTECTION	YES	-
OVERCURRENT & SHORT CIRCUIT PROTECTION	YES	> 30 sec.
SURGE & OVERCURRENT PROTECTION	YES	ITU-T K21
SAFETY PROTECTION	YES	IEC60950 and IEC60065
FIRE SECURITY	YES	UL94-V0
RESISTENCE TO IMPACT	YES	20 times drop from height of 1m
VIBRATION	YES	IEC 721-3-2M2 and IEC 721-3-3M3
AC INPUT PLUG	Type A Male Plug	Colombian electrical outlets
DC OUTPUT PLUG	Jack 5.5 / 2.2mm	cable 24 AWG / length of 180 cm
OPERATING TEMPERATURE	-0°C - 40°C	-
STORAGE TEMPERATURE	-10°C - 80°C	-
HUMIDITY	5% - 90%	0°C - 40°C, 72 hours
DIMENSIONS	69 x 38 x 27 mm	-



GT-PSU12-1.5A
POWER SUPPLY - 12V 1.5A

	VALUE	CONDITION
INPUT VOLTAGE	90 - 240V AC	
FREQUENCY	45 - 65 Hz	
INPUT CURRENT	0.5 A max.	
OUTPUT VOLTAGE	12V	
OUTPUT VOLTAGE TOLERANCE	± 5%	
MAX. OUTPUT CURRENT	1.5A	
OUTPUT POWER	18W	
STAND-BY POWER	0.3W max.	
LINE REGULATION	± 3%	
LOAD REGULATION	± 5%	
AC LEAKAGE CURRENT	0.25 mA max.	@240V AC
RIPPLE AT MAX. POWER	120 mVpp	-
EFFICIENCY	> 80%	@115/230V AC with 1/4, 1/2, 3/4 & full load
RISE TIME	40ms max.	@100V AC max. load
TURN-ON TIME	< 3s	@115V AC max. load
INSULATION RESISTENCE	> 50 MΩ	@500V DC
OVERVOLTAGE PROTECTION	YES	-
OVERCURRENT & SHORT CIRCUIT PROTECTION	YES	> 30 sec.
SURGE & OVERCURRENT PROTECTION	YES	ITU-T K21
SAFETY PROTECTION	YES	UL / EN / IEC62368 (IEC60950, IEC60065)
FIRE SECURITY	YES	UL94-V0
RESISTENCE TO IMPACT	YES	20 times drop from height of 1m
VIBRATION	YES	IEC 721-3-2M2 and IEC 721-3-3M3
AC INPUT PLUG	Type A Male Plug	Colombian electrical outlets
DC OUTPUT PLUG	Jack 5.5 / 2.1mm	cable 24 AWG / length of 150 cm
OPERATING TEMPERATURE	-0°C - 40°C	-
STORAGE TEMPERATURE	-10°C - 80°C	-
HUMIDITY	5% - 90%	0°C - 40°C, 72 hours
DIMENSIONS	70 x 33 x 43 mm	-



GT-PSU12-2A
POWER SUPPLY - 12V 2A



GT-HGU-12V-2A
POWER SUPPLY - 12V 2A
For optical fiber modem

	VALUE	CONDITION
INPUT VOLTAGE	90 - 240V AC	-
FREQUENCY	45 - 65 Hz	-
INPUT CURRENT	0.32 A max.	-
OUTPUT VOLTAGE	12V	-
OUTPUT VOLTAGE TOLERANCE	± 5%	-
MAX. OUTPUT CURRENT	2A	-
OUTPUT POWER	24W	-
STAND-BY POWER	0.1W max.	-
LINE REGULATION	± 2%	-
LOAD REGULATION	± 5%	-
AC LEAKAGE CURRENT	0.25 mA max.	@240V AC
RIPPLE AT MAX. POWER	40 mVpp	-
EFFICIENCY	> 85%	@115/230V AC with 1/4, 1/2, 3/4 & full load
RISE TIME	40ms max.	@100V AC max. load
TURN-ON TIME	< 2s	@115V AC max. load
INSULATION RESISTENCE	> 50 MΩ	@500V DC
OVERVOLTAGE PROTECTION	YES	-
OVERCURRENT & SHORT CIRCUIT PROT.	YES	> 30 sec.
SURGE & OVERCURRENT PROTECTION	YES	ITU-T K21
SAFETY PROTECTION	YES	IEC60950 and IEC60065
FIRE SECURITY	YES	UL94-V0
RESISTENCE TO IMPACT	YES	20 times drop from height of 1m
VIBRATION	YES	IEC 721-3-2M2 and IEC 721-3-3M3
AC INPUT PLUG	-	-
DC OUTPUT PLUG	Jack 5.5 / 2.1mm	-
OPERATING TEMPERATURE	-0°C - 40°C	-
STORAGE TEMPERATURE	-10°C - 80°C	-
HUMIDITY	5% - 90%	0°C - 40°C, 72 hours
DIMENSIONS	76 x 43 x 32 mm	-

	VALUE	CONDITION
INPUT VOLTAGE	90 - 264V AC	-
FREQUENCY	47 - 63 Hz	-
INPUT CURRENT	0.7 A max.	-
OUTPUT VOLTAGE	12V	-
OUTPUT VOLTAGE TOLERANCE	± 5%	-
MAX. OUTPUT CURRENT	2A	-
OUTPUT POWER	24W	-
STAND-BY POWER	0.1W max.	-
LINE REGULATION	± 3%	-
LOAD REGULATION	± 5%	-
AC LEAKAGE CURRENT	0.25 mA max.	@264V AC
RIPPLE AT MAX. POWER	90 mVpp	-
EFFICIENCY	> 87%	@115/230V AC with 1/4, 1/2, 3/4 & full load
RISE TIME	70ms max.	@100V AC max. load
TURN-ON TIME	< 3s	@115V AC max. load
INSULATION RESISTENCE	> 100 MΩ	@500V DC
OVERVOLTAGE PROTECTION	YES	-
OVERCURRENT & SHORT CIRCUIT PROT.	YES	> 30 sec.
SURGE & OVERCURRENT PROTECTION	YES	ITU-T K21
SAFETY PROTECTION	YES	IEC60950 and IEC60065
FIRE SECURITY	YES	UL94-V0
RESISTENCE TO IMPACT	YES	20 times drop from height of 1m
VIBRATION	YES	IEC 721-3-2M2 and IEC 721-3-3M3
AC INPUT PLUG	Type A male plug	Colombian electrical outlets
DC OUTPUT PLUG	Jack 5.5 / 2.5mm	Cable 20AWG/length of 150cm
OPERATING TEMPERATURE	-0°C - 40°C	-
STORAGE TEMPERATURE	-10°C - 80°C	-
HUMIDITY	5% - 90%	-
DIMENSIONS	78 x 36 x 46 mm	-

ACCESSORIES

RJ45 CONNECTOR



RE-RJ45C
FOR UTP CABLE

ELECTRICAL	Voltage Rating:	125V AC
	Current Rating:	1.5 A
	Contact Resistance:	30 mΩ MAX.
	Insulation Resistance:	500 MΩ MIN 500 VDC.
	Dielectric Withsand:	500 VAC R.M.S. 60Hz, 1MIN.
MECHANICAL	Insertion Force:	10 N
	Pull-out Force:	10 N
	Locking Force:	75 N
	Mechanical Operations:	250 Mating cycles Min.
MATERIAL	Housing:	PC (94V-0)
	Contact:	Phosphor Bronze T = 0.35mm
	Plating:	Au 3u"
	Shield:	H65 Brass T = 0.25 mm
ENVIRONMENTAL	Storage:	-40°C to 85°C
	Operation:	0°C to 70°C

CONFORMING TO FCC PART 68.

COMPRESSION CONNECTORS



GT-FSCOM7



GT-FCOM7

SURGE PROTECTOR



GT-SP
SURGE PROTECTOR

FREQUENCY RANGE	5-2500 MHz
INSERTION LOSS	5-1000 MHz >0.4 dB 1000-1500 MHz >0.6 dB 1500-2150 MHz >1.0 dB 2150-2500 MHz >1.5dB
RETURN LOSS	5-1000 MHz >18 dB 1000-1500 MHz >16 dB 1500-2150 MHz >14 dB 2150-2500 MHz >10 dB
NOM. IMPULSE DISCHARGE CURRENT	5KA (@8/20uS)
FIRING VOLTAGE (GAS TUBE ARRESTOR, VOLTS CHOOSE)	56V, 90V, 150V or 230V
POWER PASS	18V/1A maximum
IMPEDANCE	75Ω
CONNECTOR TYPE	Female to Female
SIZE	13 x 41 mm
WEIGHT	18gr

SPLITTERS



GT-SP21
SPLITTER 2x1



GT-SP41
SPLITTER 4x1

INPUT FREQUENCY RANGE	5 + 2400 MHz	5 + 2400 MHz
INSERTION LOSS	≤ 5 dB	≤ 10 dB
RETURN LOSS	≥ 10 dB	≥ 10 dB
DC PASS	DC Pass max. 24V, 0.8A	DC Pass max. 24V, 0.8A



GT-SBSW24
SWITCH 2X4
950 - 2150 MHZ



GT-SBSW28
Switch 2x8
950 - 2150 MHZ

FREQUENCY RANGE	950 - 2150 MHz	950 - 2150 MHz
CONTROL	13/18 V + 0/22 KHz	13/18 V + 0/22 KHz
CONTROL HISTERESIS	0.5V	0.5V
INSERTION LOSS	5 dB maximum	5 dB maximum
ISOLATION	20 dB minimum 18 dB minimum	20 dB minimum 18 dB minimum
RETURN LOSS	-10 dB minimum -7 dB minimum	-10 dB minimum -7 dB minimum
MAXIMUM INPUT LEVEL	0 dBm	0 dBm
SUPPLY VOLTAGE	12 - 20V	12 - 20V
POWER CONSUMPTION	32mA maximum	40mA maximum
TEMPERATURE RANGE	-30°C - +70°C	-30°C - +70°C
IMPEDANCE	75Ω	75Ω
INPUT	2	2
OUTPUT	4	8
POWER PASSING	500 mA	500 mA



GT-SBSW34
Switch 3x4
54 - 800 MHz
950 - 1450 MHz

SATELLITE

NUMBER OF INPUTS	2
FREQUENCY RANGE	950 - 1450 MHz
INPUT & OUTPUT RETURN LOSS	10 dB (minimum)
INSERTION LOSS GAIN	-2 to +5 dB
MAXIMUM INPUT	-23 dBm per Transponder (@-40 dBc IMD) 16 Transponders input operational @-20dBm

VHF/UHF/CABLE/ATSC PASSIVE INPUT

NUMBER OF INPUTS	1
FREQUENCY RANGE	54 to 806 MHz
THROUGH LOSS	12 dB (maximum)

VHF-UHF/SAT ISOLATION (BTW. FILTER 3 dB POINT)

BETWEEN 700 MHz and 950 MHz	45 dB (minimum)
BETWEEN 806 MHz AND 950 MHZ	35 dB (minimum)
THIRD-ORDER IMD PRODUCTS (FOR TWO-ONE, @-15 dBm OUTPUT)	-50 dBc (maximum)

CROSS-POL. ISOLATION (SAME SAT)	30 dB (minimum)
AIN FLATNESS, ANY 24 MHz BAND (PK-PK)	< or = 1.0 dB (maximum)
WORST CASE BIAS CURRENT TO LNB (/IN.)	220 mA (maximum)

BIAS CURRENT TO MULTISWITCH (EACH CHANNEL FROM EACH IRD)	30 - 80 mA (Some IRD needs min 30 mA idle current loading)
---	---

SHORT CIRCUIT PROTECTION (WORK IN CONJUNCTION WITH IRD CKT)	Yes
--	------------

LNB BIAS VOLTAGE DROP (THROUGH MULTISWITCH)	0.7V DC (maximum)
--	--------------------------

TYPICAL POLARISATION CONTROL VOLTAGE AT IRD OUTPUT UNDER FULL LOAD	LHCP: 17.75 to 21.0V RHCP: 12.75 to 14.0V
---	--

MULTISWITCH LHCP/RHCP SWITCHING RANGE	14.5 - 15.5 Vdc
---------------------------------------	------------------------

NUMBER OF COMBINED MULTISWITCH OUTPUTS	4
--	----------

CONNECTORS TYPE	"F" Female
-----------------	-------------------

WEATHER CAPS FOR UNUSED F CONNECTORS	4
--------------------------------------	----------

CASE GROUND POINT	Yes
-------------------	------------

OPERATING ENVIRONMENT	Outdoor & Indoor
-----------------------	-----------------------------

OPERATING TEMPERATURE RANGE	-34°C ~ +60°C
-----------------------------	----------------------

MAX. BODY DIMENSION (W x D x H)	95 x 76 x 20 mm
----------------------------------	------------------------

MASTER CARTON QUANTITY	200 pcs
------------------------	----------------

PATCH CORDS



GT-CRJ-45
CAT5e PATCH CORD

OUTER JACKET	Yellow PVC
HIGH QUALITY CONDUCTORS	-
LENGTH	2.0 m
CALIBER	28AWG
CABLE DIAMETER	4.5 mm
WIRING CONDITION	GOOD, PASS
CONNECTOR LEVEL	TIGHTENED, PASS
INSULATION RESISTANCE	10MΩ minimum
STANDARD	568B
PROTECTIVE JACKET	2 x
CONNECTOR STANDARD	2 x Male
	RJ-45 8P8C GOLD PINS CONNECTOR



GT-CPCRJ-11
RJ-11 PATCH CORD

OUTER JACKET	Gray PVC
HIGH QUALITY CONDUCTORS	99.99% oxygen free
LENGTH	2.0 m
CALIBER	28AWG
CABLE DIAMETER	4.5 mm
WIRING CONDITION	GOOD, PASS
CONNECTOR LEVEL	TIGHTENED, PASS
INSULATION RESISTANCE	10MΩ minimum
STANDARD	GOLD PINS
PROTECTIVE JACKET	2 x
CONNECTOR STANDARD	2 x RJ11 Male
	GOLD PINS RJ11 2P2C CRYSTAL HEAD CONNECTOR



GT-RJ45CAT6a
CAT6a PATCH CORD

OUTER JACKET	PVC
HIGH QUALITY CONDUCTORS	-
LENGTH	2.0 m
CALIBER	24AWG
CABLE DIAMETER	4.5 mm
WIRING CONDITION	GOOD, PASS
CONNECTOR LEVEL	TIGHTENED, PASS
INSULATION RESISTANCE	-
STANDARD	00. CE Marking - EU 99. WEEE Directive
PROTECTIVE JACKET	-
CONNECTOR STANDARD	-
	RJ45 8(8) CAT6a S/FTP



GT-RJ45CAT6
CAT6 PATCH CORD

OUTER JACKET	Gray PVC
HIGH QUALITY CONDUCTORS	-
LENGTH	2.0 m
CALIBER	24AWG
CABLE DIAMETER	4.5 mm
WIRING CONDITION	GOOD, PASS
CONNECTOR LEVEL	TIGHTENED, PASS
INSULATION RESISTANCE	-
STANDARD	00. CE Marking - EU 99. WEEE Directive
PROTECTIVE JACKET	-
CONNECTOR STANDARD	-
	RJ45 8(8) CAT6 U/UTP

RCA CABLE



GT-3RCA15
3x RCA CABLE

OUTER JACKET	PVC
HIGH QUALITY CONDUCTORS	99.99% Oxygen Free Conductors
LENGTH	1.5 m
CABLE DIAMETER	2.6mm x 7.8mm
INNER WIRE	(10 / 0.10 CCS * 1C + 10 / C0.10 CCS) * 3P
WIRING CONDITION	GOOD, PASS
CONNECTOR LEVEL	TIGHTENED, PASS
PLUG	BRASS RCA CONNECTORS RED/YELLOW/WHITE SURFACE SMOOTHNESS GLOSSINESS GOOD ELECTROPLATING QUALITY NO ABRAISON, NO SCRATCH



GT-HDMI20
HIGH SPEED HDMI CABLE

OUTER JACKET	PVC
HQ CONDUCTORS	99.99% Oxygen Free C.
LENGTH	2.0 m
WIRE	26AWG
VIDEO RESOLUTION	(4k x 2k pixels) must support full 1080p, 1440p, 1600p, 2160p
BANDWIDTH	13.8 Gbps speed (data transfer)
FRAME RATE	120Hz
COLOR DEPTH	12 bits
CERTIFICATIONS	RoHS, UL, CE, FCC, ISO9001: 2008, ISO14001: 2004
VOLTAGE	300 VDC 5MΩ / 10ms
INSULATION RESISTANCE	10MΩ / 10ms
CONTACT RESISTANCE	2 Ω maximum
OPERATING TEMPERATURE	-25°C - +80°C
IMPEDANCE DIFFERENCE	100 +/- 10Ω (TDR)

- 3D compatibility, 4k x 2k, ARC return audio channel
- Support 7.1 surround sound formats and lossless audio formats (DTS-HD & Dolby Digital True HD)

HDMI CABLE



GT-HDMI18
PREMIUM HIGH SPEED HDMI CABLE

OUTER JACKET	PVC
HQ CONDUCTORS	BC material, 1/0.254 ± 0.008 size
LENGTH	1.8 m
WIRE	30AWG
VIDEO RESOLUTION	up to 4K @50/60fps, HDR transport
BANDWIDTH	Up to 18 Gbps speed (data transfer)
FRAME RATE	-
COLOR DEPTH	12 bits
CERTIFICATIONS	PREMIUM certified cable ISO9001: 2008, ISO14001: 2004
VOLTAGE	300 VDC 5MΩ / 10ms
INSULATION RESISTANCE	10MΩ / 10ms
CONTACT RESISTANCE	5 Ω maximum
OPERATING TEMPERATURE	-25°C - +80°C
IMPEDANCE DIFFERENCE	-

MULTISWITCH





RE-MSPR5/24C
CASCADE MULTISWITCH



RE-MSP5/16C
CASCADE MULTISWITCH

	FREQUENCY RANGE	CONTROL	INSERTION LOSS/GAIN	SATELLITE INPUTS ISOLATION	MAXIMUM INPUT LEVEL	MAXIMUM OUTPUT LEVEL	POWER CONSUMPTION	OTHER
	LNB Inputs: Terrestrial Input: Outputs:		Satellite: Terrestrial Active: Terrestrial Passive:	Between V/H Polarisations: Between Low/High Bands: Between Satellite Systems:	Satellite: Terrestrial:	Satellite: Terrestrial:	From Each Receiver: From Power Supply:	Ter. Pre-amplifier supply: Dimensions (W x D x H): Temperature Change:
	950 - 2400 MHz 5 - 862 MHz (passive) 5 - 2300 MHz (passive)	DiSEqC 1.0/2.0	10 dB average Loss - 22 dB average Loss	20 dB minimum 25 dB minimum 25 dB minimum	105 dBµV average 105 dbµV average (passive)	95 dBµV average 83 dbµV average (passive)	80 mA (18V) 4 W (passive) external	- 186 x 146 x 51 mm -25°C to + 60°C
	950 - 2300 MHz 5 - 862 MHz (passive) 5 - 2300 MHz (passive)	13/18v + 0/22 kHz	3 dB average Loss - 17 dB average Loss	20 dB minimum 25 dB minimum -	90 dBµV average 100 dbµV average (passive)	87 dBµV average 83 dbµV average (passive)	55 mA (18V) 4 W (passive) external	- 82 x 152 x 45 mm -25°C to + 60°C

CABLES





RE-1/2" RF
Coaxial Cable 1/2" RF 50Ω

INNER CONDUCTOR	Copper Clad Aluminium	3.55 ±0.02
DIELECTRIC	Physical Foam Polyethylene	8.89 ± 0.2
OUTER CONDUCTOR	Helical Copper Tube	12.19 ± 0.2
JACKET	Black PE	13.46 ± 0.2

CAPACITANCE	80.0 pF/m
IMPEDANCE	50.0 Ω
VELOCITY	83.0 %
PEAK POWER RATING	19.0 %
RF PEAK VOLTAGE	1.1 kV
INSULATION RESISTANCE	> 5000 MΩ/km
CUT-OFF FREQUENCY	12.5 GHz
INSULATION VOLTAGE	2.5 kVrms
JACKET SPARK	5.0 kVrms
SHIELDING EFFECTIVENESS	> 120

	50 mm
MINIMUM SINGLE BENDING RADIUS	125 mm
MINIMUM REPEATED BENDING RADIUS	15
NUMBER OF BENDS	110 kg
TENSILE STRENGTH	-55°C ~ +85°C
STORAGE TEMPERATURE	-20°C ~ +60°C
INSTALLATION TEMPERATURE	-55°C ~ +85°C
OPERATING TEMPERATURE	

VSWR ≤1.15	-	10M ~ 3000MHz	-
VSWR ≤1.10	≤1.10	800M ~ 1000MHz	-
	≤1.15	1700M ~ 2000MHz	-
		2100M ~ 2400MHz	



RE-7/8" RF
Coaxial Cable 7/8" RF 50Ω

Smooth Copper Tube	9
Physical Foam Polyethylene	22.10
Angular Corrugated Copper Tube	25.00
Black PE	28.00

CAPACITANCE	76.0 pF/m
IMPEDANCE	50.0 Ω
VELOCITY	88.0 %
PEAK POWER RATING	91.0 %
RF PEAK VOLTAGE	3.0 kV
INSULATION RESISTANCE	> 5000 MΩ/km
CUT-OFF FREQUENCY	5.2 GHz
INSULATION VOLTAGE	10 kVrms
JACKET SPARK	8.0 kVrms
SHIELDING EFFECTIVENESS	> 120

	90 mm
MINIMUM SINGLE BENDING RADIUS	250 mm
MINIMUM REPEATED BENDING RADIUS	15
NUMBER OF BENDS	147 kg
TENSILE STRENGTH	-55°C ~ +85°C
STORAGE TEMPERATURE	-20°C ~ +60°C
INSTALLATION TEMPERATURE	-55°C ~ +85°C

VSWR ≤1.15	-	10M ~ 3000MHz	-
VSWR ≤1.10	≤1.10	800M ~ 1000MHz	-
	≤1.15	1700M ~ 2000MHz	-
		2100M ~ 2400MHz	



RE-QR 540-88

RE-QR 860-88

CABLE TYPE	540 series	860 series
CONSTRUCTION TYPE	Welded	Welded
ENVIRONMENTAL SPACE	Riser	Aerial
CABLE LENGTH	60°C	899.16 m
DIAMETER OVER CENTER CONDUCTOR, NOMINAL	1.127 m	5.156 mm
DIAMETER OVER DIELECTRIC, NOMINAL	3.15 mm	21.031 mm
DIAMETER OVER JACKET, NOMINAL	13.056 mm	24.384 mm
DIAMETER OVER OUTER CONDUCTOR, NOMINAL	15.494 mm	21.844 mm
JACKET THICKNESS, NOMINAL	13.716 mm	1.27 mm
OUTER CONDUCTOR THICKNESS, NOMINAL	0.889 mm	0.406 mm
CAPACITANCE	0.343 mm	0.343 mm
CAPACITANCE TOLERANCE	50.197 pF/m	50.197 pF/m
CHARACTERISTIC IMPEDANCE	±1.0 pF/ft	±1.0 pF/ft
CHARACTERISTIC IMPEDANCE TOLERANCE	75 Ω	75 Ω
DC RESISTANCE NOTE	±2 Ω	±2 Ω
	Nominal values based on standard condition of 20°C	Nominal values based on standard condition of 20°C
DC RESISTANCE, INNER CONDUCTOR, NOMINAL	3.346 Ω/km	1.345 Ω/km
DC RESISTANCE, LOOP, NOMINAL	5.282 Ω/km	2.395 Ω/km
DC RESISTANCE, OUTER CONDUCTOR, NOMINAL	1.936 Ω/km	1.05 Ω/km
JACKET SPARK TEST VOLTAGE	5000 Vac	5000 Vac
NOMINAL VELOCITY OF PROPAGATION (NVP)	88%	88%
OPERATING FREQUENCY BAND	5-3000 MHz	5-3000 MHz
STRUCTURAL RETURN LOSS	26dB @1002-1218 MHz 30dB @5-1002MHz	26dB @1002-1218 MHz 30dB @5-1002MHz
CENTER CONDUCTOR MATERIAL	Copper-clad Aluminium	Copper-clad Aluminium
DIELECTRIC MATERIAL	Foam PE	Foam PE
JACKET MATERIAL	Black Fire Retardant PE / UV Protection	Black PE / UV Protection
OUTER CONDUCTOR MATERIAL	Aluminium	Aluminium
MINIMUM BEND RADIUS, BONDED	101.6 m	177.8 m
PULLING TENSION, MAXIMUM	99.79 kg	204.117 kg
PACKAGING TYPE	REEL	REEL
WEIGHT, GROSS	17.42 kg/m	40.094 kg/m



RE-RG6CCS30
TRISHIELD

RE-RG6CCS30
TRISHIELD MESSENGER

CONDUCTOR	Material:	Copper Clad Steel	Copper Clad Steel
	Nominal Diameter:	1.02 ± 0.02 mm	1.02 ± 0.02 mm
	Conductivity:	24%	24%
INSULATION	Material:	Foamed PE	Foamed PE
	Nominal Diameter:	4.57 ± 0.10 mm	4.57 ± 0.10 mm
SHIELDING	Material:	Bonded Aluminium Foil	Bonded Aluminium Foil
	Coverage:	120%	120%
BRAIDING	Material:	Aluminium Wires	Aluminium Wires
	Number of wires:	64 * 0.16 mm	64 * 0.16 mm
	Coverage:	60%	60%
SHIELDING	Material:	Al / PET / Al Foil	Al / PET / Al Foil
	Coverage:	120%	120%
JACKET	Colour:	White or Black	Black
	Application:	Indoor and Outdoor	Indoor and Outdoor
	Nominal Diameter:	7.05 ± 0.10 mm	7.05 ± 0.10 mm
	Thickness of jacket:	0.80 ± 0.10 mm	0.80 ± 0.10 mm
MESSENGER	Material:	-	Steel
	Nominal Diameter:	-	1.30 ± 0.01
IMPEDANCE		75 ± 3 Ω	75 ± 3 Ω
CAPACITANCE		53 ± 2 pF/m	53 ± 2 pF/m
VELOCITY		85%	85%
INNER CONDUCTOR DC RESISTANCE		< 95.78 Ω / km	< 95.78 Ω / km
OUTER CONDUCTOR DX RESISTANCE		< 23.22 Ω / km	< 23.22 Ω / km



RE-RG11CCS90
CABLE COAXIAL RG-11 AL 90%



RE-TTCH-RG690-BV-WH
RG-6/90% DUALSHIELD

CONDUCTOR	Material:	Copper Clad Steel	Copper Clad Steel (18 AWG)
	Nominal Diameter:	1.63 ± 0.01 mm	1.02 ± 0.01 mm
	Conductivity:	24%	21%
INSULATION	Material:	Foamed PE	Foamed PE
	Nominal Diameter:	7.11 ± 0.10 mm	4.57 ± 0.10 mm
SHIELDING	Material:	Bonded Aluminium Foil	Bonded Aluminium Foil
	Coverage:	18%	18%
BRAIDING	Material:	Aluminium Wires	Aluminium Wires
	Number of wires:	168 * 0.16 mm	8 * 16 * 0.12 mm
	Coverage:	90%	90%
JACKET	Material:	PVC / UV Protection	PVC / UV Protection
	Colour:	Black	White or Black
	Application:	Indoor and Outdoor	Indoor and Outdoor
	Nominal Diameter:	10.16 ± 0.10 mm	6.9 ± 0.10 mm
	Thickness of jacket:	1.0 ± 0.10 mm	0.80 ± 0.10 mm
PACKAGE	Length:	-	305 meters / wooden spool
	Wooden Spool Size:	-	32 cm x 25 cm x 10 cm
IMPEDANCE		75 ± 3 Ω	75 ± 3 Ω
CAPACITANCE		53 ± 2 pF/m	53 ± 2 pF/m
VELOCITY		82%	85%
INNER CONDUCTOR DC RESISTANCE		< 36 Ω / km	< 100.5 Ω / km
OUTER CONDUCTOR DX RESISTANCE		< 21 Ω / km	< 32 Ω / km



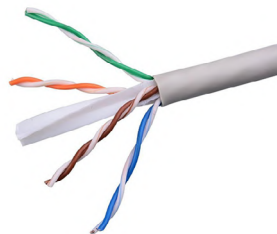
RE-UTPCAT5E24305W
UTP CAT5e

PHYSICAL CHARACTERISTICS	<p>Nr. of Conductor Pairs: 4</p> <p>Size: 25 AWG</p> <p>Stranding: 1/0.47 ± 0.008mm</p> <p>Conductor material: Bare Copper</p> <p>Shield material: NO</p> <p>Rip Cord: YES</p> <p>Insulation Overall Diameter.: 0.95 ± 0.02mm</p> <p>Insulation Avg. Thickness: 0.225 ± 0.02mm</p> <p>Insulation Material: HDPE</p> <p>Outer Jacket: PVC W001-G White</p> <p>O. J. Avg. Wall thickness: 0.55 ± 0.02mm</p> <p>Outer Jacket Nom. O. D.: 5.2 ± 0.2mm</p>
COLOUR CODE	<p>Pair 1 BLUE: Blue/White</p> <p>Pair 2 ORANGE: Orange/White</p> <p>Pair 3 GREEN: Green/White</p> <p>Pair 4 BROWN: Brown/White</p>
MECHANICAL CHARACTERISTICS	<p>Temp. rating (installation): -20°C to +70°C</p> <p>Temp. rating (operating): -20°C to +70°C</p> <p>Min. Ben radius: Eight times the outer</p> <p>Max. Pulling force: 25 lbs</p> <p>Tensile strength (pre-aging): >= 13.8 Mbpa</p> <p>Elongation (pre-aging): >= 100%</p> <p>Aging condition: 100°C * 168 hours</p> <p>After aging: >= 85% unaged</p>
ELECTRICAL CHARACTERISTICS	<p>Rated Temperature/Voltage: 2000V/KM</p> <p>Max. Conductor DC res. @20°C: 9.5Ω / 100 meters</p> <p>Max. DC res. Unbalanced @20°C: 5%</p> <p>Max. Pair-Pair GND Capacit. Unb.: 330pF/100 meters</p> <p>Characteristic Impedance (1~100 MHz) 100 ± 10Ω</p> <p>Mutual Capacitance: 5.6 nF /100 meters</p> <p>Maximum Delay Skew: 45ns /100 meters</p>
PACKAGING	<p>305m in CARTON BOX</p> <p>WHITE</p>
CABLE MARKING	<p>As per customer request</p>



RE-UTPCAT5E24305WLSZH
UTP CAT5e

CONDUCTOR	Material:	Solid Bare Copper
	Diameter:	0.45 ± 0.005mm
	AWG:	1.13
REFERENCE STANDARD		ISO/IEC 11801
		TIA/EIA568C
MULTI-CONSTRUCTION		4 pairs (8 cores)
INSULATION (HDPE)	Thickness:	AVG: 0.225mm, MIN: 0.22mm
	Insulation diameter:	0.84 ± 0.02 mm
EACH PAIR IS TWISTED	Polyester:	NO
AND UNSHIELDED	Filler:	NO
	AL/PET:	NO
	Drain Wire:	NO
	Rip Cord:	YES
JACKET (LSZH)	Thickness:	AVG: 0.5mm, MIN: 0.45mm
	Outer diameter:	4.8 ± 0.20 mm
	Jacket Colour:	WHITE
COLOUR (INSULATION C.)	BLUE:	White/Blue
	ORANGE:	White/Orange
	GREEN:	White/Green
	BROWN:	White/Brown
MARKING		According to customer.
CHARACTERISTICS	Max. Cond. DC res. @20°C:	< 95 Ω/km
	Rated temperature:	75°C
	Rated Voltage:	300V
	Velocity Ratio:	66%
PACKAGING INFORMATION:		305m/Pull-Box
(CONTACT US FOR MORE DETAILS)		100m/Roll
		500m/Wooden reel



RE-UTPCAT623305W
UTP CAT6

CONDUCTOR	Material:	Solid Bare Copper
	Diameter:	0.52± 0.005mm
	AWG:	23
REFERENCE STANDARD		ISO/IEC 11801
		ANSI/TIA/EIA568B.2-1
MULTI-CONSTRUCTION		4 pairs (8 cores)
INSULATION (HDPE)	Thickness:	AVG: 0.225mm, MIN: 0.5mm
	Insulation diameter:	0.93 ± 0.02 mm
EACH PAIR IS TWISTED	Polyester:	NO
AND UNSHIELDED	Filler:	YES
	AL/PET:	NO
	Drain Wire:	NO
	Rip Cord:	YES
JACKET (PVC)	Thickness:	AVG: 0.55mm, MIN: 0.5mm
	Outer diameter:	6.1 ± 0.20 mm
	Jacket Colour:	WHITE
COLOUR (INSULATION C.)	BLUE:	White/Blue
	ORANGE:	White/Orange
	GREEN:	White/Green
	BROWN:	White/Brown
MARKING		According to customer.
CHARACTERISTICS	Max. Cond. DC res. @20°C:	< 93.8 Ω/km
	Rated temperature:	75°C
	Rated Voltage:	300V
	Velocity Ratio:	65%
PACKAGING INFORMATION:		
(CONTACT US FOR MORE DETAILS)		305m/Pull-Box



RE-SFTPCAT726305
SFTP CAT7



RE-SFTPCAT726LSZH
SFTP CAT7

		RE-SFTPCAT726305 SFTP CAT7	RE-SFTPCAT726LSZH SFTP CAT7
DESCRIPTION	Temp. rating installation:	0°C ~ 50°C	0°C ~ 50°C
	Temp. rating operation:	-20°C ~ +60°C	-20°C ~ +60°C
CONSTRUCTION	Flaming test:	IEC60332-1	IEC60332-1
	Application:	FOR PATCH CABLE	-
	Reference standard:	ISO/IEC 1180 & IEC61156-6	ISO/IEC 1180 & IEC61156-6
	Conductor:	SOLID BARE COPPER	SOLID BARE COPPER
	AWG:	26	26
	Structure:	7/0.16	7/0.16
	Conductor dia. (±0.01mm):	0.48 mm	0.48 mm
	Insulation:	FMPE	FMPE
	Avg. Thickness	0.28 mm	0.28 mm
	Insulation dia. (±0.01mm):	1.06 mm	1.06 mm
	Twisted:	2C	2C
	AL Foil (each pair):	YES	YES
	Assembly:	4P	4P
	Braid:	TINNED COPPER	TINNED COPPER
	Single diameter:	0.1 mm	0.1 mm
	Coverage (%):	>= 40%	>= 40%
COLOUR	Jacket:	LSZH	LSZH
	Avg. Thickness:	0.50 mm	0.50 mm
	Min. Point Thickness:	0.42 mm	0.42 mm
	Outer dia. (±0.01mm):	6.2 mm	6.2 mm
	Jacket colour:	According to customer.	According to customer.
	Insulation colours:	BLUE: Blue & White ORANGE: Orange & White GREEN: Green & White BROWN: Brown & White	BLUE: Blue & White ORANGE: Orange & White GREEN: Green & White BROWN: Brown & White
ELECTRICAL CHARACTERISTICS	Max. Conductor DC resistance @20°C:	145 Ω/KM	145 Ω/KM
	Min. insulation resistance:	5000 MΩ*KM	5000 MΩ*KM
	Mutual Capacitance @1KHz:	< 56 nF/KM	< 56 nF/KM
	Pair-to-Ground Capacitance unbalance:	<= 160 pF/100m	<= 160 pF/100m
	Delay Skew:	4-600MHz / ≤25	4-600MHz / ≤25
	Resistance unbalance within a pair:	<= 2%	<= 2%
	Min. Bending radius installation:	8*OD	8*OD
MECHANICAL CHARACTERISTICS	NVP:	72%	72%
	Min. elongation @break of the conductor:	>= 10%	>= 10%
	Min. elongation @break of the insulation:	> 300%	> 300%
	Min. elongation @break of the sheath:	> 100%	> 100%
	Tensile strength of sheath:	> 9Mpa	> 9Mpa
	Aging condition:	100 x 168 °C x hrs	100 x 168 °C x hrs
After tensile Strength:	≥70% of unaged	≥70% of unaged	
Aging elongation:	≥70% of unaged	≥70% of unaged	

LATIN AMERICA LINE - CATEGORIES

SATELLITE DISHES



	GT-LH60LA 60 cm	GT-LH75LA 75 cm	GT-LH85LA 85 cm
DIAMETER SIZE	600 x 650 mm	750 x 820 mm	790 x 850 mm
DISH THICKNESS	0.5 mm +5%	0.6 mm +5%	0.6 mm +5%
FREQUENCY RANGE	10.7-13GHz	10.7-13 GHz	10.7-13 GHz
LNB HOLDER	40 mm	40 mm	40 mm
GAIN AT 11.75 GHZ	36.8 dB	38.5 dB	39.1 dB
ELEVATION	0°C - 90°C	0°C - 90°C	0°C - 90°C
RAW MATERIAL	Galvanized Steel Aluminium	Galvanized Steel Aluminium	Galvanized Steel Aluminium
FINISHING	Poly. powder coat	Poly. powder coat	Poly. powder coat



	GT-LH90LA 90 cm	GT-LH110LA 110 cm	GT-LH120LA 120 cm
DIAMETER SIZE	900 x 990 mm	1050 x 1150 mm	1200 x 1300 mm
DISH THICKNESS	0.7 mm +5%	0.6 mm +5%	0.8 mm +5%
FREQUENCY RANGE	10.7-13GHz	10.7-13 GHz	10.7-13 GHz
LNB HOLDER	40 mm	40 mm	40 mm
GAIN AT 11.75 GHZ	40.9 dB	41.5 dB	43 dB
ELEVATION	0°C - 90°C	0°C - 90°C	0°C - 90°C
RAW MATERIAL	Galvanized Steel Aluminium	Galvanized Steel Aluminium	Galvanized Steel Aluminium
FINISHING	Poly. powder coat	Poly. powder coat	Poly. powder coat



PAGE	REFERENCE	PCS./BOX	EAN CODE
	LNB		
	GT-SAT LNBS		
3	GT-SLRC1	100	543001615561
3	GT-TL1	100	543001615578
3	GT-QDL1	50	543001615585
4	GT-QTL1	50	543001615608
4	GT-QTM40	50	543001615639
4	GT-OCL1	30	543001615592
	RELOOK LNB		
5	RE-MINI S	72	543001615783
	ACCESSORIES		
7	GT-AGC1	1	543001613581
7	GT-AGCAMP-2	1	543001613581
7	GT-INLS20	1	543001613581
8	GT-PSU12-1A	1	-
9	GT-PSU12-1.5A	1	-
10	GT-PSU12-2A	1	-
10	GT-HGU-12V-2A	-	-
11	RE-RJ45C	5000	-
11	GT-FSCOM7	-	-
11	GT-FCOM7	-	-
11	GT-SP	-	-
11	GT-SP21	300	543001615301
11	GT-SP41	300	543001615325
12	GT-SBSW24	1	-
12	GT-SBSW28	1	-
13	GT-SBSW34	1	-
14	GT-CRJ45	340	-
14	GT-CPCRJ11	500	-
14	GT-RJ45CAT6A	340	-
14	GT-RJ45CAT6	340	-
14	GT-3RCA15	250	-
14	GT-HDMI20	250	-
14	GT-HDMIP18	-	-
	MULTISWITCH		
16	RE-MSPR5/24C	1	543001616049
16	RE-MSP5/16C	1	543001616032
17	CABLES		
	FOR ALL DETAILS AND PACKAGING INFORMATION, PLEASE CONTACT US.		
27	SATELLITE DISHES		
	FOR ALL DETAILS AND PACKAGING INFORMATION, PLEASE CONTACT US.		



GT-SAT INTERNATIONAL
16 RUE MILLEWEE
L-7257 HELMSANGE
WALFERDANGE, LUXEMBOURG

TEL.: +352 26 43 22 03
FAX.: +352 26 43 22 04

INFO@GT-SAT.COM
WWW.GT-SAT.COM